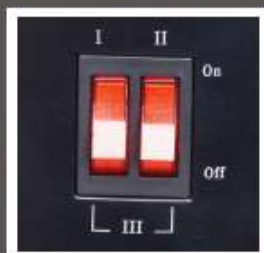


# GOLDAIR™

2400W

## 11 Fin Oil Column Heater

OPERATING INSTRUCTIONS



Models: GOC135

# General Care And Safety Guide

**Thank you for choosing a Goldair Oil Heater. This Goldair Heater has been designed and manufactured to high standards of engineering and with proper use and care, as described in this leaflet, will give you years of useful service. Please read these instructions carefully.**

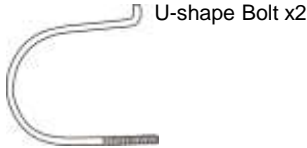
1. Use only the voltage specified on the rating label of the appliance.
2. Keep all objects at least 1 metre from the front, sides and rear of the appliance.
3. This appliance is intended for household use only and not for commercial or industrial use.
4. Indoor use only.
5. Use this appliance only as described in this manual. Any other use is not recommended by the manufacturer and may cause fire, electric shock or injury.
6. The common cause of overheating is deposits of dust or fluff in the appliance. Ensure these deposits are removed regularly by unplugging the appliance and vacuum cleaning the air vents and grills.
7. Always unplug appliance when not in use.
8. When the appliance has been unpacked, check it for transport damage and ensure all parts have been delivered. If parts are missing or the appliance has been damaged, contact the Goldair Customer Services Team.
9. If your appliance does not work, or is not working properly, contact the place of purchase or the Goldair Customer Services Team.
10. Do not connect the appliance to mains supply until completely assembled and adjusted.
11. Ensure hands are dry before handling the plug or main unit.
12. Do not locate the appliance directly below any power socket outlet.
13. Ensure heater is on a flat, stable, heat-resistant surface.
14. Do not operate with cord set coiled up as a heat build up is likely, which could be sufficient to become a hazard.
15. Carry out regular checks of the supply cord to ensure no damage is evident.
16. Do not operate this appliance with a damaged cord, plug or after the appliance malfunctions or has been dropped or damaged in any manner. Return to a qualified electrical person for examination, electrical service or repair.
17. Do not twist, kink or wrap the cord around the appliance, as this may cause the insulation to weaken and split. Always ensure that all cord has been removed from any cord storage area and is unrolled before use.
18. It is recommended that this heater is plugged directly into the wall socket. Power boards are not rated to supply power to high wattage appliances.
19. A correctly specified, undamaged extension cord may be used with this heater provided it is used in a safe manner.
20. Do not remove plug from power socket until the appliance has been switched off.
21. Do not remove plug from power socket by pulling cord; always grip plug.
22. Do not place cord under carpet or cover with rugs or furniture. Arrange the cord so it cannot be tripped over.
23. Don't place appliance on bedding or on thick & long carpet where the openings may get blocked.
24. Switch off and use handle provided when moving
25. Do not place appliance close to radiant heat source.
26. Never use the appliance to dry clothes.
27. Do not insert or allow foreign objects to enter any ventilation or exhaust opening, as this may cause an electric shock, fire or damage to the appliance.
28. Do not sit on the appliance.
29. Do not use abrasive cleaning products on this appliance. Clean with a damp cloth (not wet) rinsed in hot soapy water only. Always remove plug from the mains supply before cleaning.
30. Do not operate in areas where petrol, paint or other flammable liquids are used or stored.
31. This appliance is not intended for use by persons (including children) with reduced physical, sensory or mental capabilities or lack of experience and knowledge, unless they are supervised or have been given instruction concerning the use of the appliance by a person responsible for their safety.
32. Children should be supervised to ensure that they do not play with the appliance.
33. Do not use this appliance in the immediate surrounds of a bath, a shower, or a swimming pool or other liquids. The appliance must not be immersed in any liquids.
34. There are no user serviceable parts installed in the unit.
35. Do not place the unit in wardrobes or other enclosed spaces as this may cause fire hazards.
36. This unit is not supposed to be used in or around locations where foodstuffs, works of art or delicate articles of science, etc are stored.
37. **WARNING** you must not cover this heater. Covering this heater presents fire risk and will activate the safety fuse; permanently disabling the unit.

## TECHNICAL SPECIFICATION

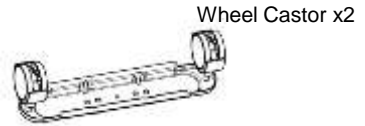
Model No: GOC135  
Supply: 230-240VAC 50Hz  
Wattage: 2300-2400W

# Components Of Your Heater

Main Body x1



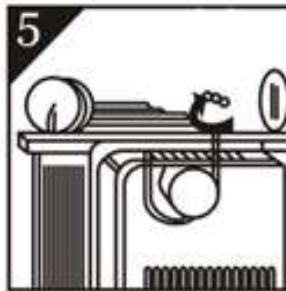
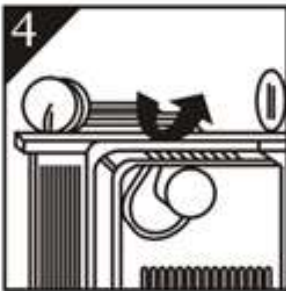
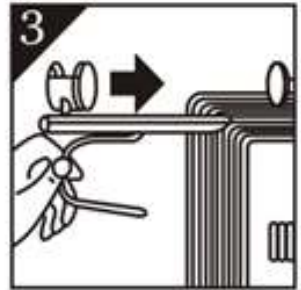
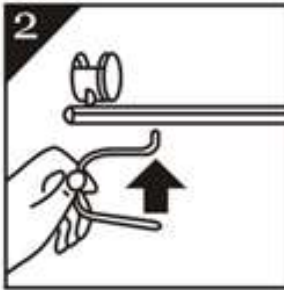
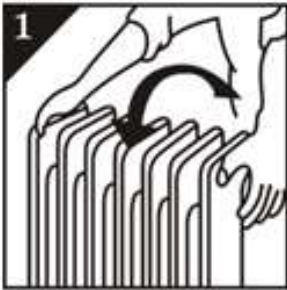
U-shape Bolt x2



Wheel Castor x2



Wing Nut x2



## ASSEMBLY

Carefully turn the Main Body upside-down on a scratch-free and stable surface. Be careful to prevent damage to the paint finish or your floor surfacing (Fig.1).

Fit the wheel assemblies onto the Main Body by placing the U-shaped bolts between the outermost fins on each side of the Main Body (see Fig.2 - 4). Securely fasten the wheel assemblies onto the Main Body by screwing the wing nuts onto the U-shaped bolts (see Fig. 5).

**IMPORTANT:** Please fit the wheel assemblies as per the diagram. Any other position may affect the stability of the heater.

**WARNING: Operate the heater in normal upright position only with wheel assemblies attached to the bottom. Any other position could create a hazardous situation.**

# Operating Your Oil Column Heater

**Always choose a safe location for the heater, keeping in mind the safety precautions outlined. Ensure all packaging has been removed from the unit before use. This appliance requires no installation, it should be used solely as a portable appliance.**

**WARNING: Keep all objects at least 1 metre from the front, sides and rear of the appliance.**

**WARNING: In order to avoid overheating, do not cover the heater.**

**WARNING: Never leave this heater unattended.**

**WARNING: Take care in positioning your heater, using the timer will mean the heater will come on automatically. Fire may result if placed next to combustible material.**

**PLEASE NOTE: As the GOC135 model is fitted with a timer, the timer has been set to the "ON" position. Please refer to the timer section for setting instructions.**

## HEAT CONTROL SWITCH

The control switch positions are:

- I Minimum heating
- II Medium heating
- III Maximum heating

Check that the Heat Control Switch is set to Off position before plugging the heater into the mains supply. For greater economy, use the High Heat setting initially and then switch to the Lower Heat settings.

## THERMOSTAT

Turn the thermostat knob clockwise until you reach the maximum temperature on the graduated scale. When the desired room temperature is reached, slowly turn the knob anti-clockwise until the heater turns off (you will hear a click). The heater will now cycle on and off to maintain the set temperature.

**CAUTION:** The heater generates heat during use. Proper precautions must be taken to prevent the risk of burns, scalds, fires or other damage to persons.

## SAFETY DEVICE

This appliance has three protection devices:

The first device will automatically turn the appliance off if the appliance is not in the appropriate operating position.

The second device automatically disconnects & reconnects the appliance at a pre-set temperature.

The third device disconnects the appliance permanently in case of overheating, power spike or product damage by means of a thermal fuse (it is non resettable).

Do not attempt to dismantle the heater. There are no user serviceable parts. For service or repair, contact an authorised electrical service technician.

## CARE AND CLEANING

The heater requires regular cleaning to ensure trouble free operation:

Unplug the heater from the mains supply before cleaning.

Ensure that the heater has been allowed to cool down completely before cleaning.

Use a damp cloth (not wet) to wipe the exterior of the heater to remove dust and dirt.

Never use solutions such as benzene, thinners or polishing agents.

Use a vacuum cleaner to remove dust and fluff from around the grills and fins.

Ensure the heater is dry before plugging back into the mains supply.

This heater is filled with a precise quantity of special oil. Repairs requiring opening of the oil container are only to be made by the manufacturer or his service agent who should be contacted if there is an oil leak.

When scrapping or disposing of the heater, follow the regulations concerning disposal of oil.

## PROOF OF PURCHASE

To receive warranty retain receipt as proof of purchase.

# Operating Your Oil Column Heater

## TIMER

You must set the time prior to programming the Timer. To do this; turn the outer dial of the timer in a clockwise direction until the time of the day (24-hour clock) corresponds with the triangular marking.

Example if it is 2pm (1400 hours) then set the triangular mark in line with 14. One complete turn of the dial corresponds to 24 hours.

There are 96 "riders", positioned around the dial, each rider represents 15 minutes.

Where all the "riders" are pushed to the outside of the timer the heater will be ON continuously.

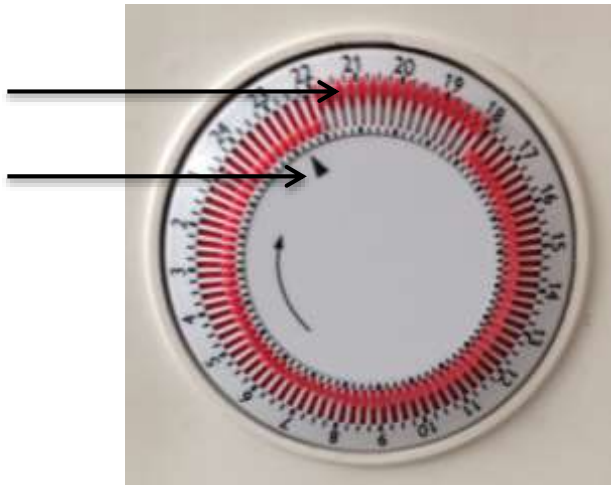
To set a specific time for example:

If you want the heater to be on from 6pm to 10pm, then set all the riders from 18 to 22 (1800 hours to 2200 hours) to the outside of the rim and all other riders to the inside of the timer. The unit will then turn on automatically at 6pm and off again at 10pm.

**WARNING!** Take care in positioning your heater, using the timer will mean the heater will come on automatically. Fire may result if placed next to combustible material.

Riders pushed to the outside rim to turn ON

Indicates actual time



# GOLDAIR

## SUPPORT AND TECHNICAL ADVICE

**Goldair – New Zealand**

Monday – Friday 8am-5pm

Phone +64 (0)9 917 4000

Phone 0800 232 633

info@cdb.co.nz

**Goldair – Australia**

Monday – Friday 8am-5pm

Phone +61 (0)3 9365 5100

Phone 1300 465 324

info@cdbgoldair.com.au



## Two Year Warranty

Thank you for purchasing this Goldair product. Your product is warranted against faults and manufacture when used in normal domestic use for a period of **two years**. In non-domestic use Goldair limits the voluntary warranty to **three months**.

Goldair undertake to repair or replace this product at no charge if found to be defective due to a manufacturing fault during the warranty period.

This warranty excludes damage caused by misuse, neglect, shipping accident, incorrect installation, or work carried out by anyone other than a qualified electrical service technician.

PLEASE KEEP YOUR RECEIPT AS THIS WILL HELP VERIFY YOUR WARRANTY.

The benefits given to you by this warranty are in addition to other rights and remedies available to you under law in relation to the goods or services to which this warranty relates.

In Australia, our goods come with guarantees that cannot be excluded under the Australian Consumer Law. You are entitled to a replacement or refund for a major failure and compensation for any other reasonably foreseeable loss or damage. You are also entitled to have the goods repaired or replaced if the goods fail to be of acceptable quality and the failure does not amount to a major failure.

In New Zealand this warranty is additional to the conditions and guarantees of the Consumers Guarantee Act (1993).

**Goldair – New Zealand**

CDB Goldair  
PO Box 100-707  
N.S.M.C  
Auckland

Phone +64 (0)9 917 4000  
Phone 0800 232 633  
[www.goldair.co.nz](http://www.goldair.co.nz)

**Goldair – Australia**

CDB Goldair Australia Pty  
PO Box 574  
South Morang  
Victoria, 3752

Phone +61 (0)3 9365 5100  
Phone 1300 GOLDAIR (1300 465 324)  
[www.goldair.com.au](http://www.goldair.com.au)

**Goldair Two Year Warranty (IMPORTANT: Please complete and retain this warranty card)**

Name \_\_\_\_\_  
\_\_\_\_\_

Address \_\_\_\_\_  
\_\_\_\_\_  
\_\_\_\_\_  
\_\_\_\_\_

Place Of Purchase \_\_\_\_\_ Date Of Purchase \_\_\_\_\_

Name Of Product \_\_\_\_\_ Model Number \_\_\_\_\_

Attach a copy of the purchase receipt to this warranty card

# GOLDAIR™

CDB ■ GOLDAIR

New Zealand  
PO Box 100-707,  
North Shore Mail Centre,  
Auckland, 0745  
[www.goldair.co.nz](http://www.goldair.co.nz)

Australia  
PO Box 574,  
South Morang,  
Victoria, 3752  
[www.goldair.com.au](http://www.goldair.com.au)